

KINTA
(ex Vinydrea)
PROTEKSAN TURQUOISE



SPECIFICATIONS

Length: 54.90 m / 180' 1"

Beam: 9.40 m / 30' 8"

Draft: 2.90 m / 9' 5"

Type: Motor-Yacht

Builder: Proteksan Turquoise

Construction year: June 2008

Naval Architect: Paolo Caliari

Interior Designer: Jean Guy Verges

Flag: MALTA

Classification: RINA C >I< HULL e MACH
Ych (MCA); Unrestricted

Year Refit: 2011-2012

Hull: Steel

Superstructure: Aluminium

Engines: 2 x 1,750 hp CAT

Generators: 3 x Caterpillar 4.4, 86 Kw

Range: 4000 NM

Cruising speed: 14 Knots

Max speed: 16 Knots

GRT: 746 tons

Displacement: 620 tons

Crew: 12

Cabins: 6 (5 double, 1 twin)

ASKING PRICE: 17.900.000 €

REFIT 2011/2012:

For this refit Owner hired Mr. Jean Guy Verges, a famous interior architect. Interior refit was carried in a contemporary style. Dark "Wenge" wood for flooring (with some insert of matching leather in main saloon and Owner's suite), all new ceilings in light camel color leather, all textiles in cotton/satin tissues in different tonalities between "milk white" and "ice white". Main stairs and stairs in Owner's quarter (from studio to bedroom and to walk-in wardrobe) are in dark brown leather. Outside spaces have been upgraded adding a big 12 guest sheltered dining area on the fly bridge deck. The hull was painted in white with blue and silver waterlines. Kinta has a large gym on sundeck with a steam shower, a big TV screen and is directly connected to the Jacuzzi.

FEY FEATURES

- Sophisticated contemporary interior (by Jean Guy Verges in 2012)
- Ceilings and interior stairs all in soft Italian leather
- Huge pool on the main deck and Jacuzzi on the sun deck
- Fully equipped Gym on the Fly Bridge, including a jet-shower
- Satellite high speed internet, Wi-Fi throughout
- Over 700 Blue-Ray movies storage
- 9.00 m GRP towing tender (2 x 250 HP) for easy shuttling and water sports
- Exceptional fully referenced Chef

ACCOMMODATION

Master Stateroom

The full beam Owner's suite is located on the main deck forward of the main lobby. It has a centreline double bed, a private lounge, a study room and oversized walk-in wardrobes and floor-to-ceiling windows. The spectacular ensuite bathroom also offers panoramic views, enhancing the feeling of open space by bringing in plenty of natural light. It has direct access to the forward deck terrace.

Guest Area

The elegantly appointed guest area is strictly separated from the crew quarters and located on the lower deck. The electro-hydraulic automatic staircase allows access to the above decks.

VIP Cabin

The elegant full beam VIP suite is situated on the lower deck complete with a lounge area, a walk-in wardrobe and ensuite facilities with a Jacuzzi and a separate shower room.

Guest Stateroom 1

The port side twin cabin is located forward on the lower deck with an ensuite shower room.

Guest Staterooms 2-3-4

The three double guest staterooms (2 starboard cabins and 1 port side cabin) are also situated on the lower deck all offering ensuite shower facilities.

Main Lobby

Sliding doors give access to the main lobby and the pantry on port side. The elevator and the main staircase interconnect all decks.

Main Deck Aft

The main aft deck is unusually oversized with its large pool/spa with a glass waterfall wall to aft is flanked by a pair of large stairways with led type night-lighting steps leading to the bathing platform that becomes a giant terrace and boarding deck. It is fully integrated in the transom and well finished with teak decking details. A hydraulic transom door opens the large lazarette. It stores the main tender lifted by the concealed "passa-crane" which is used for the tender, the gangway and the swim ladder.

Main Saloon

From the main deck aft automatic sliding doors give access to the main saloon. Its generous size of 100 square meters, the floor to ceiling windows and modern J.G. Verges interior enhance the feeling of space and comfort.

Upper Deck / Dining

The upper deck can be reached by the elevator or the central staircase. On this walk-around deck is situated the Captain's cabin with an easy access to the wheelhouse with port & starboard side entrances.

The formal dining room and the spacious and elegant lounge area are served by the large adjacent pantry. Depending on weather conditions, a circular sliding door system offers additional exterior dining space.

Sundeck / Upper Deck

The forward area features a large Jacuzzi surrounded by sun pads. Adjacent to the sun bathing area is a large gym and a spa cabin. Retractable awning and teak decking give the final touch for relaxation and outdoor recreation.

Galley / Pantry

The main galley is situated to portside on the main deck. It is fully equipped with professional stainless steel appliances, oversized food storage units and a large cold room. Wall cabinets provide ample storage. The set of three windows brings natural light.

Crew

A private entrance on the lower deck forward portside leads to large and well-appointed crew quarters with a private dining area, a service galley and an entertainment center. It is laid out for five double cabins with ensuite heads.

MECHANICAL EQUIPMENT

Engines:	2 x 1.750 hp CAT
Engine Hour:	Port: 2276 Stbrd: 2277
Generators & Electricity:	3 x Caterpillar 4.4, 86 Kw
Generator hours:	Pt: 9.861 Centre: 7.034 Pt 10.716
Electricity:	Hakan electric
Propellers:	Schaffran
Batteries:	Mastervolt
Chargers:	Mastervolt
Stabilisers:	Quantum zero speed
Water Maker:	Idromar
Fuel Centrifuge/Separator:	Alfa Laval
Air Compressor:	Frigid Air
Gearboxes for main Engines:	REINTJES I = 3,048:1
Shore Power:	Mastervolt
Generator Output:	86 KVA x 3
Bow Thruster:	HRP
Steering System:	DATA HIDROLIK
Sewage System:	HAMANN
Fresh Water System:	WILO
Bilge Water Filtration:	RWO

NAVIGATION EQUIPMENT

Magnetic Compass:	1 x C-Plath
Gyro Compass:	1 x Sperry Navigat X MK2
Automatic Pilot:	1 x Sperry Navipilot 4000
Echo Sounder:	1 x Skipper
Radar:	1 x Sperry Bridge Master
Transponder:	1 x MC Murdo
DGPS:	2 x MX 420 Navigation Systems
Charts:	1 x Sperry Naviecdis
Navtex:	1 x MC Murdo Nav 7
Log:	1 x Sperry Navinot III
Wind Instruments:	1 x Young and Wind Tracker System
Camera:	1 x Panasonic System
Night vision Camera:	FLIR

COMMUNICATION EQUIPMENT

SATCOM:	2 x Sailor Sat C 2 x V-Sat – 1 Seatel, 1 SMC wired ocean, Fleet 77
VHF:	2 x Sailor Sat RT 5022
Loudhailer:	1 x Amplidan
Landline/Intercon:	1 x PABX Panasonic System
Gmdss:	THRANE&THRANE

ENTERTAINMENT EQUIPMENT

The entertainment system is fully centralized with a Kaleidescape platform

Main Saloon

1 x Plasma 85"

1 x Large screen with projector

Dining

1 x Plasma 46"

Seating Aft Deck

Speakers served by central entertainment system

Sudeck

1 x Plasma 46"

Owner's Stateroom

1 x Plasma 46", Screen and projector

VIP Cabin

1 x Plasma 46"

Guest Cabins

1 x LCD 32" in each cabin

Captain's Cabin

1 x LCD 32"

GALLEY & LAUDRY EQUIPMENT

Cooking Equipment:	GAGGENEAU
Refrigeration/Freezer:	ELECTROLUX
Dishwasher:	HOBART
Refrigeration/Freezer:	2 x Cold rooms
Washing Machine:	3 x MIELE
Drier:	3 x MIELE
Iron Roll:	1 x MIELE

OFFICE EQUIPMENT

PC/Printer:	1 x PC with internet
	1 x PC for CCTV circuit
Fax/Copier:	1 x HP
Monitors:	1 x Touch Screen for CCTV

TENDERS & WATERSPORTS EQUIPMENT

Tenders

1 x Castoldi jet 21"

Water Sports

2 x Jet ski Yamaha cruiser 3 seats

Crane

1 x Nautical structure rescue crane 2 tons

1 x Passacrane for passarella, swimming ladder, crane 2 tons

ANCHOR & MOORING SYSTEM

1 x DATA HIDROLIK Anchor Windlass System
2 x 165 meters Anchor Chains
DATA HIDROLIK Aft Warping Capstans

SAFETY & SECURITY EQUIPMENT

Security

1 x CCTV System – system under IP w/computer double raid recordable for ISPS
7 x Cameras
3 x Touch Screens monitors

Safety

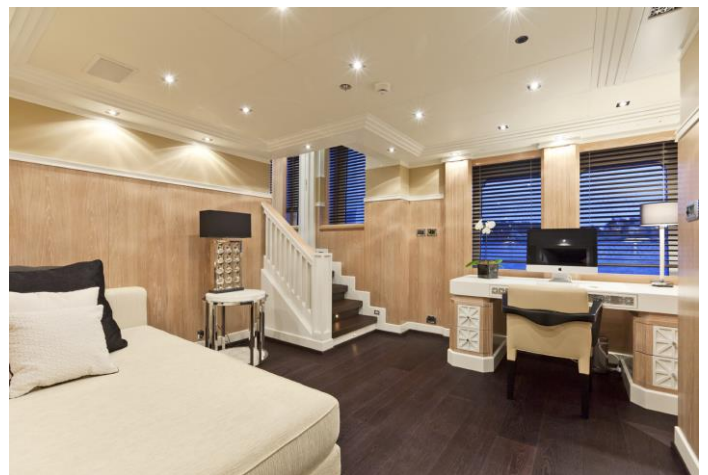
4 x Life Rafts for 25 persons
6 x Life Rings
1 x EPIRBS MAC MURDO
18 x Flares

Medical Equipment

1 x MCA medical kit

Fire Fighting

1 x CONSILIUM Fire Control System
42 x Portable Fire Extinguishers
1 x Hifog MARIOFF System



This document is not contractual. All specifications are given in good faith and offered for informational purposes only. The publisher and company do not warrant or assume any legal liability or responsibility for the accuracy, completeness, or usefulness of any information and/or images displayed. Yacht inventory, specifications and charter prices are subject to change without prior notice. None of the text and/or images used in this brochure may be reproduced without written consent from the publisher.